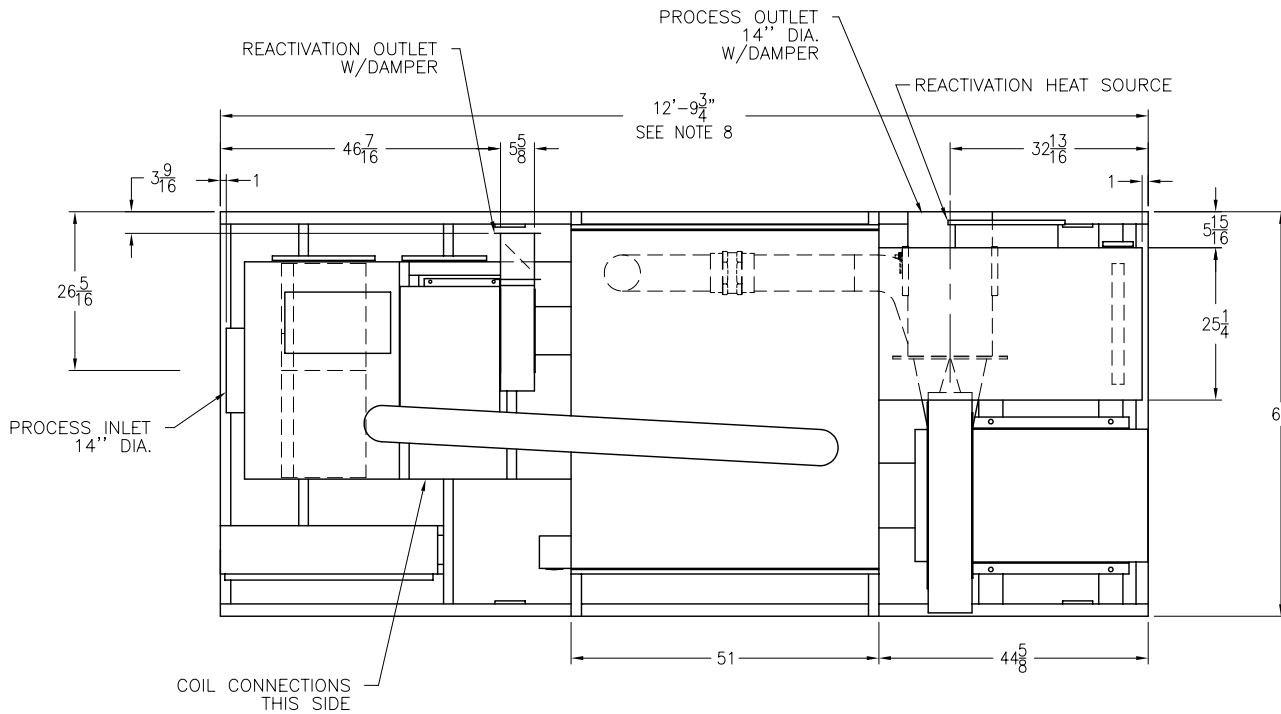


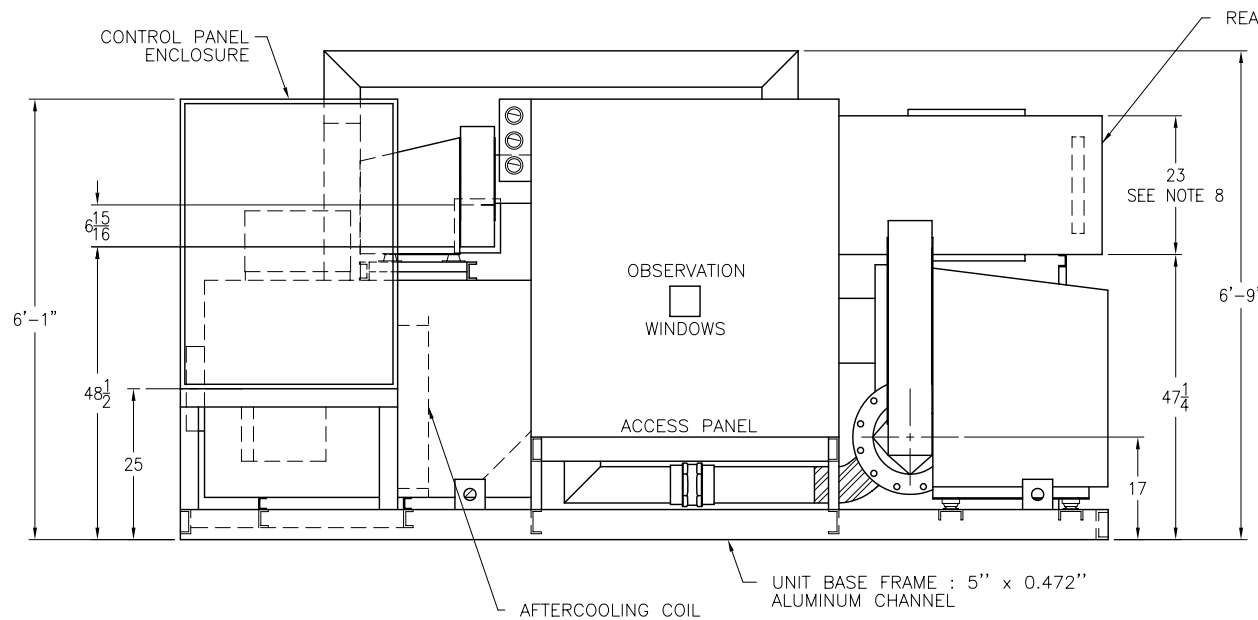


BRY-AIR SYSTEMS
 DIV. of BRY-AIR, INC.
 ROUTE 37 WEST
 SUNBURY, OHIO 43074
 TEL (740) 965-2974
 FAX (740) 965-5470
 E-MAIL: systems@bry-air.com



FDL-5000 RESIN DRYER

SPECIFICATIONS	FDL-5000
Process CFM	2940
Reactivation CFM	1131
Purge CFM	248
Process Ext. Static (inches w.c.)	12.0
Reactivation Ext. Static (inches w.c.)	0.75
Process motor H.P.	15
Reactivation motor H.P.	2
Bed motor H.P.	1/8
Reactivation Heat Req'd - MBH	366.4
Control Load - KVA @ 120 V	2.0
Approximate weight - lbs.	3300



NOTES:

1. Supply voltage must be specified.
2. Electrical components are mounted in a drip proof enclosure.
3. Unless otherwise noted, provided 35" clearance around the entire unit and 40" in front of the control panel enclosure.
4. All dimensions are in inches and are subject to change without notice.
5. Specifications subject to change without notice.
6. Two (2) pieces of 14" Dia. x 12' long Red Silicone Hose and all hardware are provided to connect Process Outlet to Hopper.
7. Three (3) pieces of 14" Dia. x 12' long Black Neoprene Hose and all hardware are provided to connect Process Inlet to Hopper.
8. The dimensions shown are for standard indoor construction with electric reactivation heat. For direct fired gas react heat the length of the unit increases to 13'-9 3/4" and the react duct height is 24 1/4".

This is not a certified drawing.
 Contact factory for certified dimensional drawings.

BAS-2107
 11/21/03