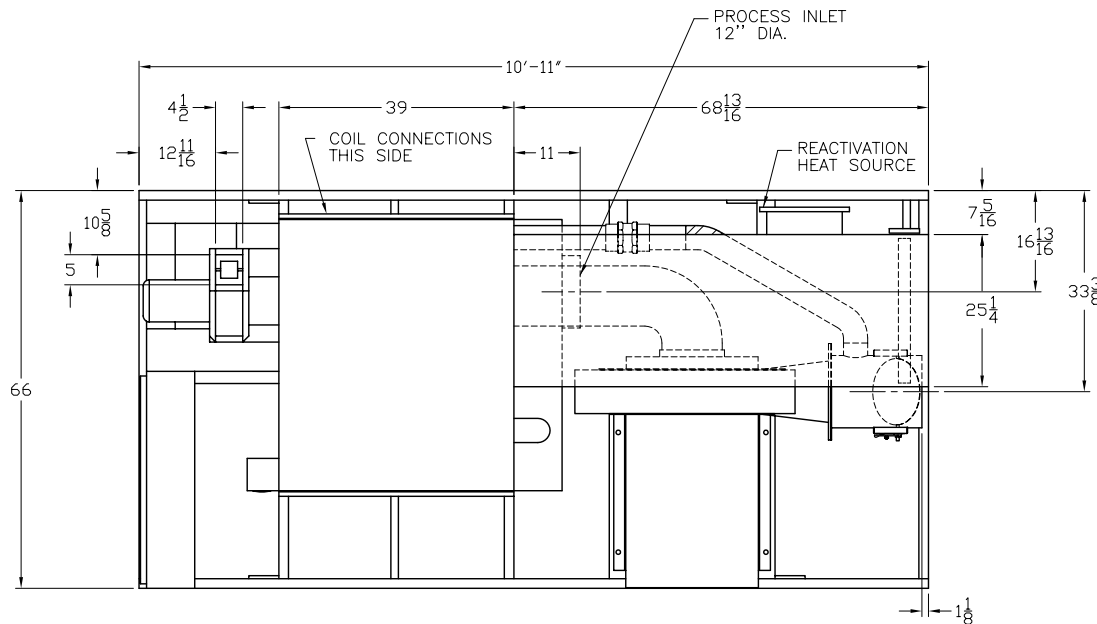


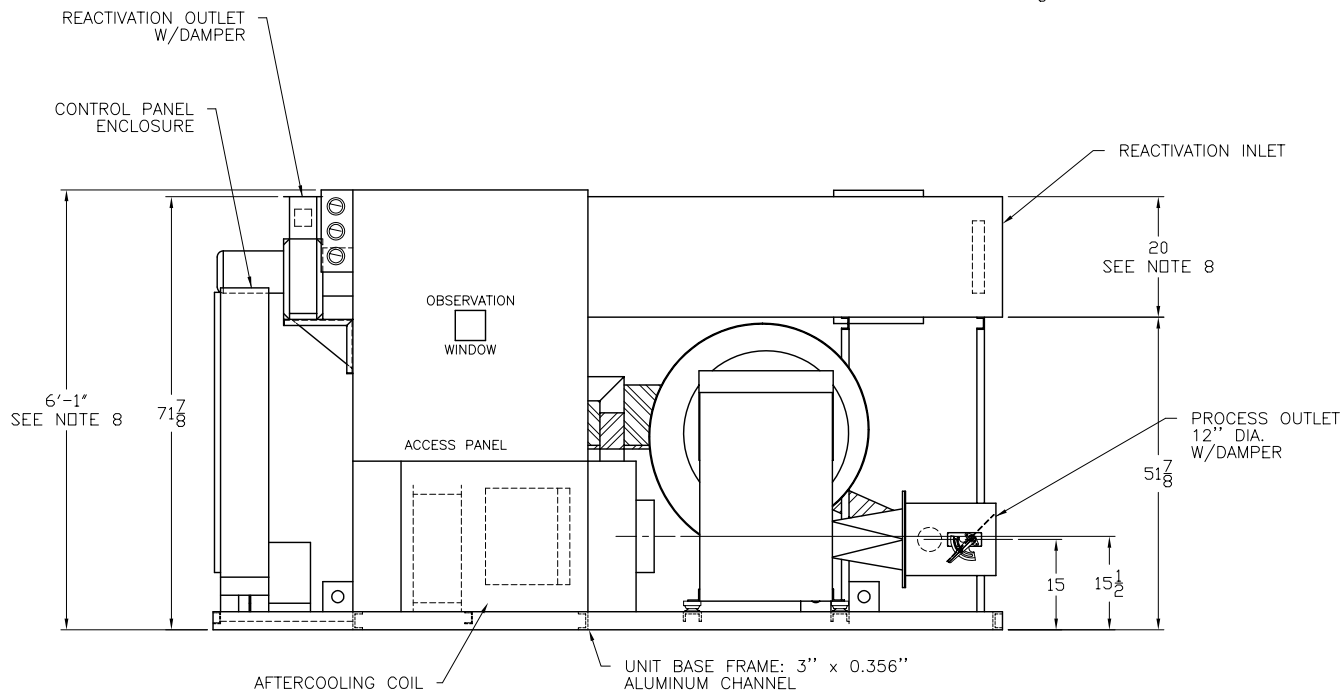


BRY-AIR SYSTEMS  
 DIV. of BRY-AIR, INC.  
 ROUTE 37 WEST  
 SUNBURY, OHIO 43074  
 TEL (740) 965-2974  
 FAX (740) 965-5470  
 E-MAIL: systems@bry-air.com



## FDL-3600 RESIN DRYER

SPECIFICATIONS	FDL-3600
Process CFM	2117
Reactivation CFM	814
Purge CFM	178
Process Ext. Static (inches w.c.)	12.0
Reactivation Ext. Static (inches w.c.)	0.75
Process motor H.P.	10
Reactivation motor H.P.	2
Bed motor H.P.	1/8
Reactivation Heat Req'd - MBH	263.8
Control Load - KVA @ 120 V	1.5
Approximate weight - lbs.	2300



### NOTES:

- Supply voltage must be specified.
- Electrical components are mounted in a drip proof enclosure.
- Unless otherwise noted, provide 25" clearance around the entire unit and 40" in front of the control panel enclosure.
- All dimensions are in inches and are subject to change without notice.
- Specifications subject to change without notice.
- Two (2) pieces of 12" Dia. x 12' long Red Silicone Hose and all hardware are provided to connect Process Outlet to Hopper.
- Two (2) pieces of 12" Dia. x 12' long Black Neoprene Hose and all hardware are provided to connect Process Inlet to Hopper.
- The dimensions shown are for standard indoor construction with electric reactivation heat. For direct fired gas react heat the height of the unit increases to 6'-5" and the react duct height is 24 1/4".

This is not a certified drawing.  
 Contact factory for certified dimensional drawings.

BAS-2106  
 11/21/03