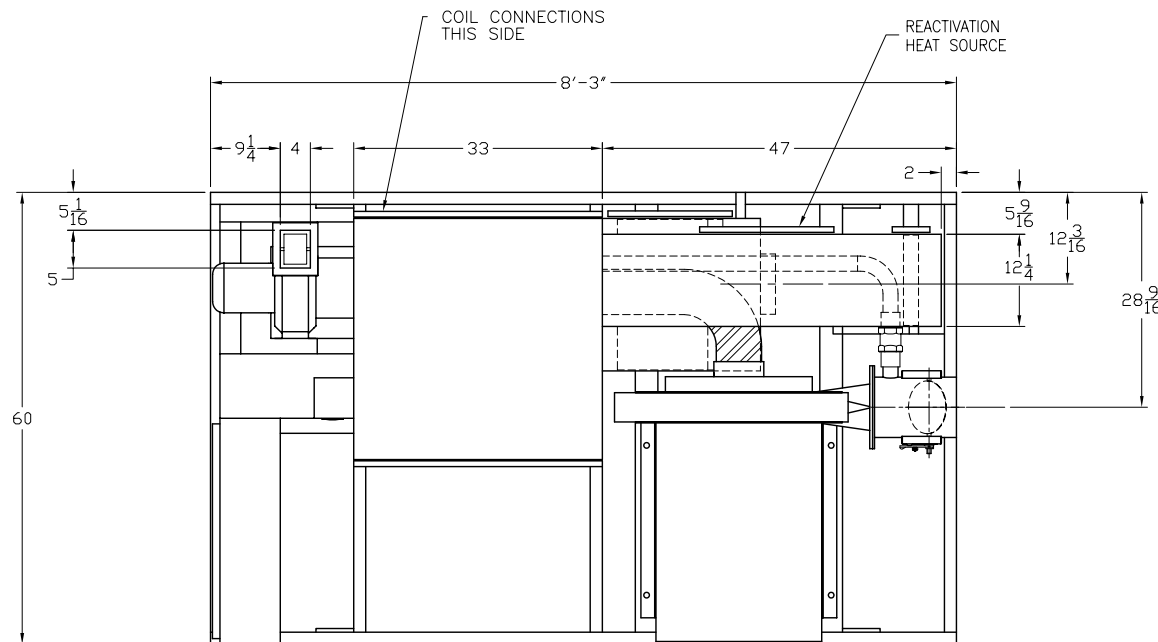


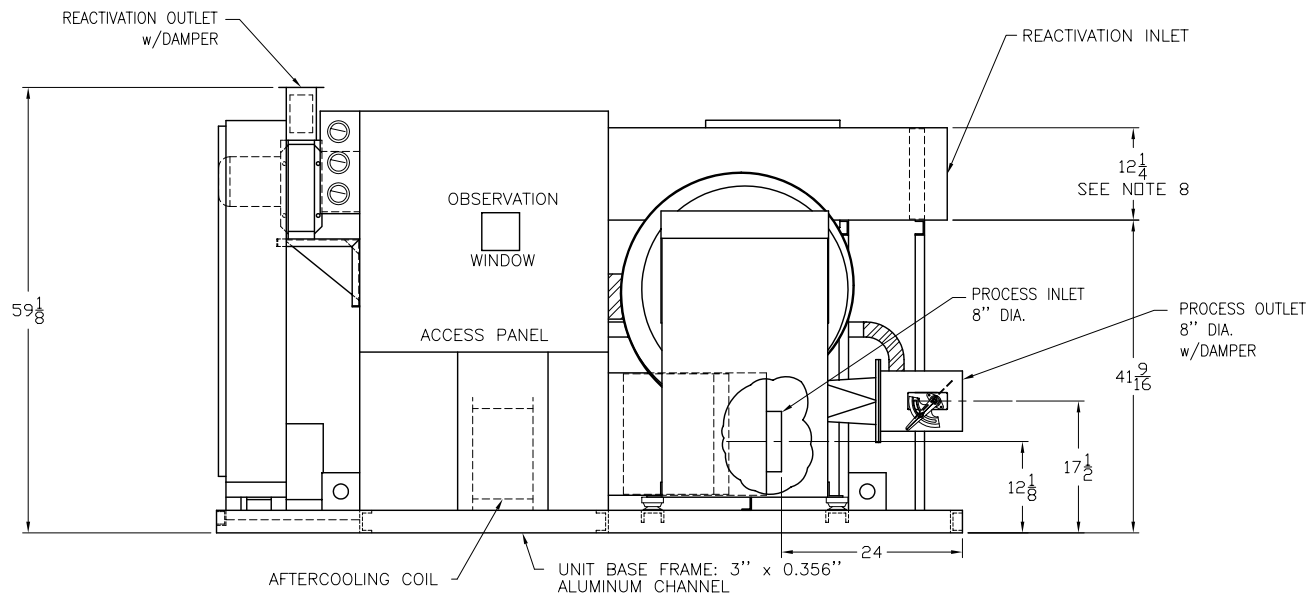


BRY-AIR SYSTEMS  
 DIV. of BRY-AIR, INC.  
 ROUTE 37 WEST  
 SUNBURY, OHIO 43074  
 TEL (740) 965-2974  
 FAX (740) 965-5470  
 E-MAIL: systems@bry-air.com

## FDL-1200 RESIN DRYER



CONTROL PANEL ENCLOSURE



SPECIFICATIONS	FDL-1200
Process CFM	706
Reactivation CFM	271
Purge CFM	59
Process Ext. Static (inches w.c.)	12.0
Reactivation Ext. Static (inches w.c.)	0.75
Process motor H.P.	3
Reactivation motor H.P.	3/4
Bed motor H.P.	1/8
Reactivation Heat Req'd - MBH	87.9
Control Load - KVA @ 120 V	0.75
Approximate weight - lbs.	1600

### NOTES:

1. Supply voltage must be specified.
2. Electrical components are mounted in a drip proof enclosure.
3. Unless otherwise noted, provide 25" clearance around the entire unit and 40" in front of the control panel enclosure.
4. All dimensions are in inches and are subject to change without notice.
5. Specifications subject to change without notice.
6. One (1) piece of 8" Dia. x 12' long Red Silicone Hose is provided to connect Process Outlet to Hopper.
7. One (1) piece of 8" Dia. x 12' long Black Neoprene Hose is provided to connect Process Inlet to Hopper.
8. The dimensions shown are for standard indoor construction, with electric reactivation heat. For direct fired gas react heat the react inlet duct height is 18 1/4".

This is not a certified drawing.  
 Contact factory for certified dimensional drawings.

BAS-2103  
 11/21/03